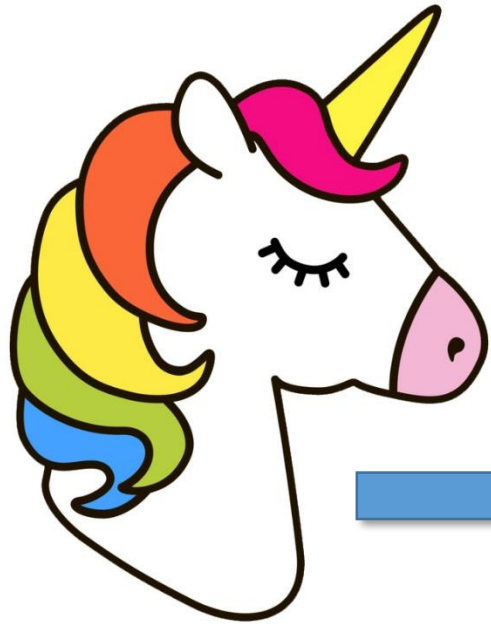


Borduurpatronen maken in PE Design

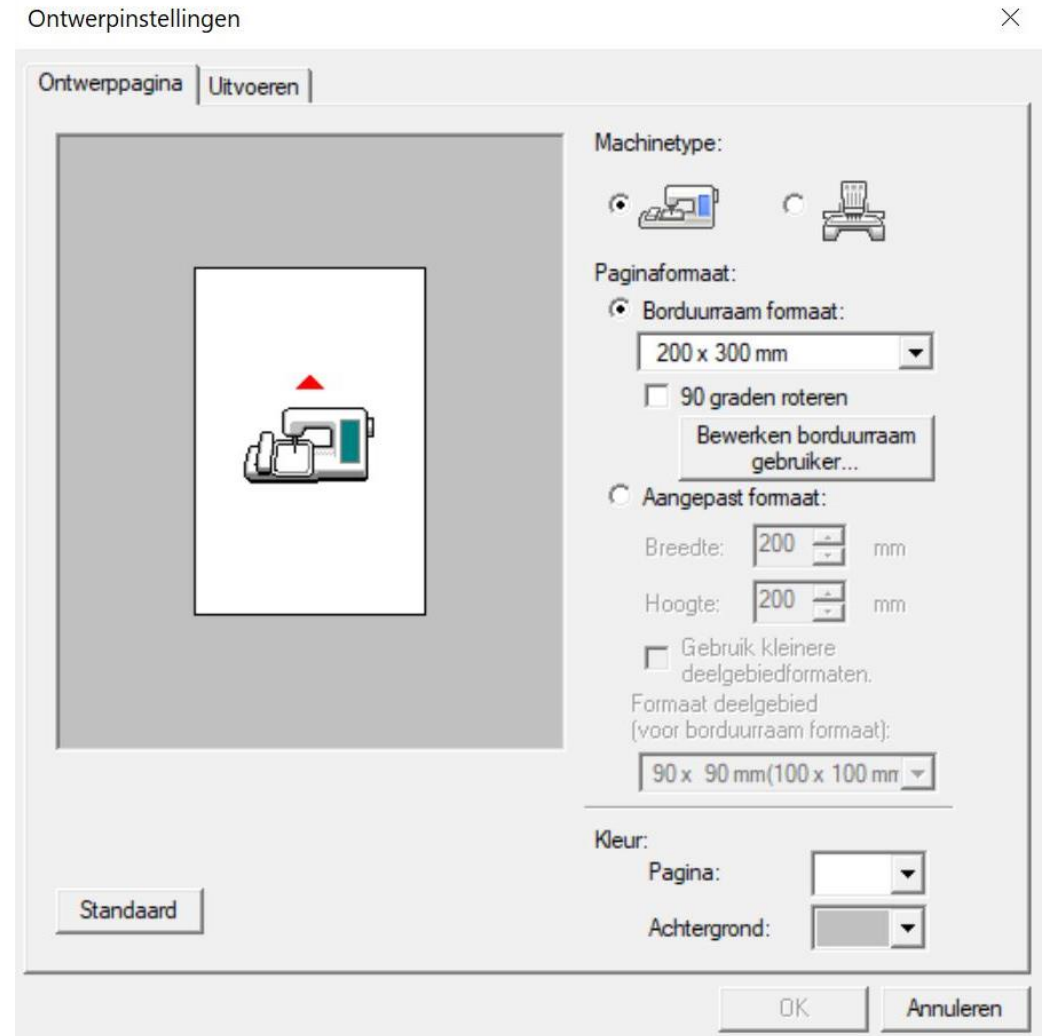
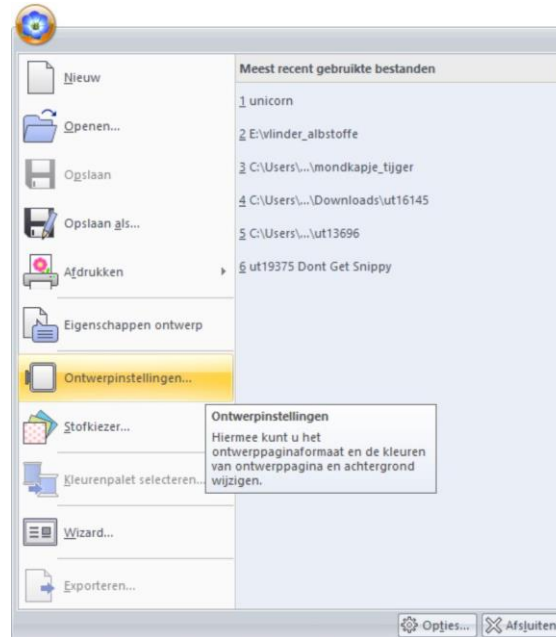
Een afbeelding converteren
met de Wizard



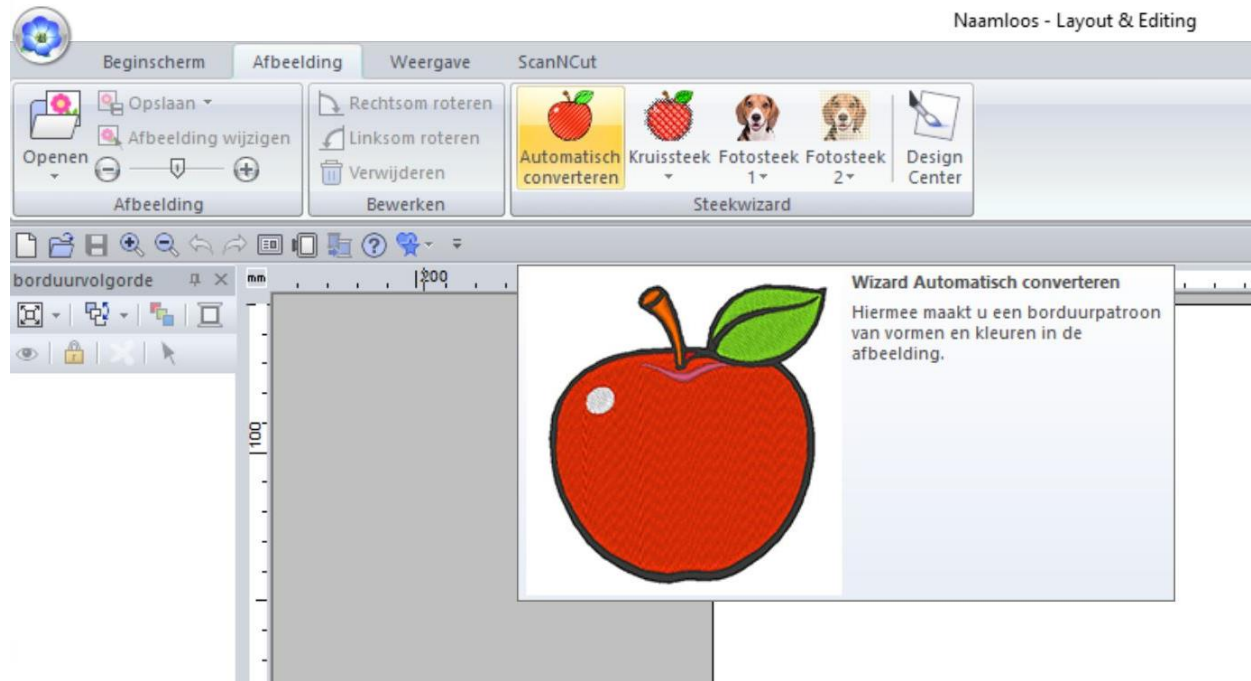
Kies je ontwerp



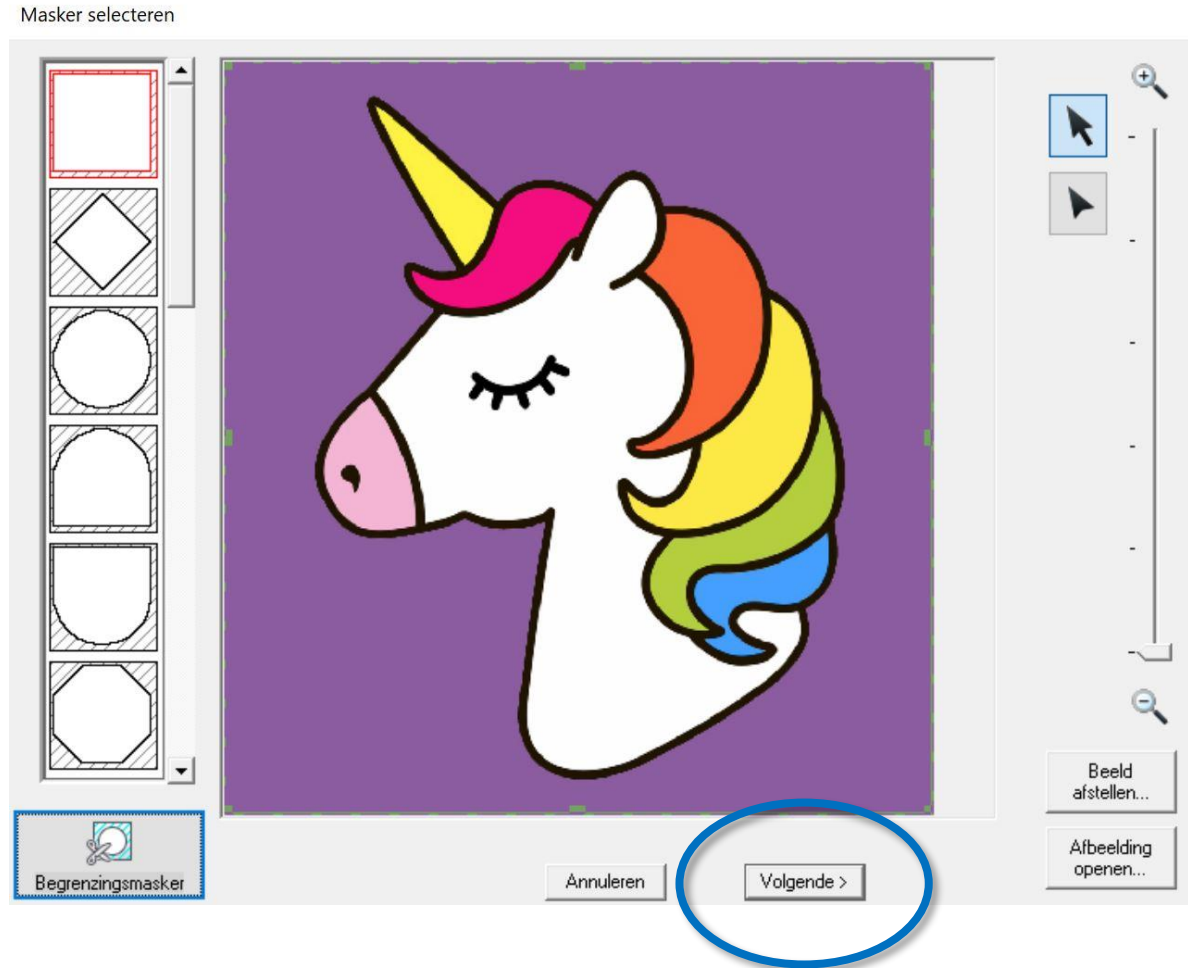
Ontwerpinstellingen



Wizard Automatisch Converteren starten

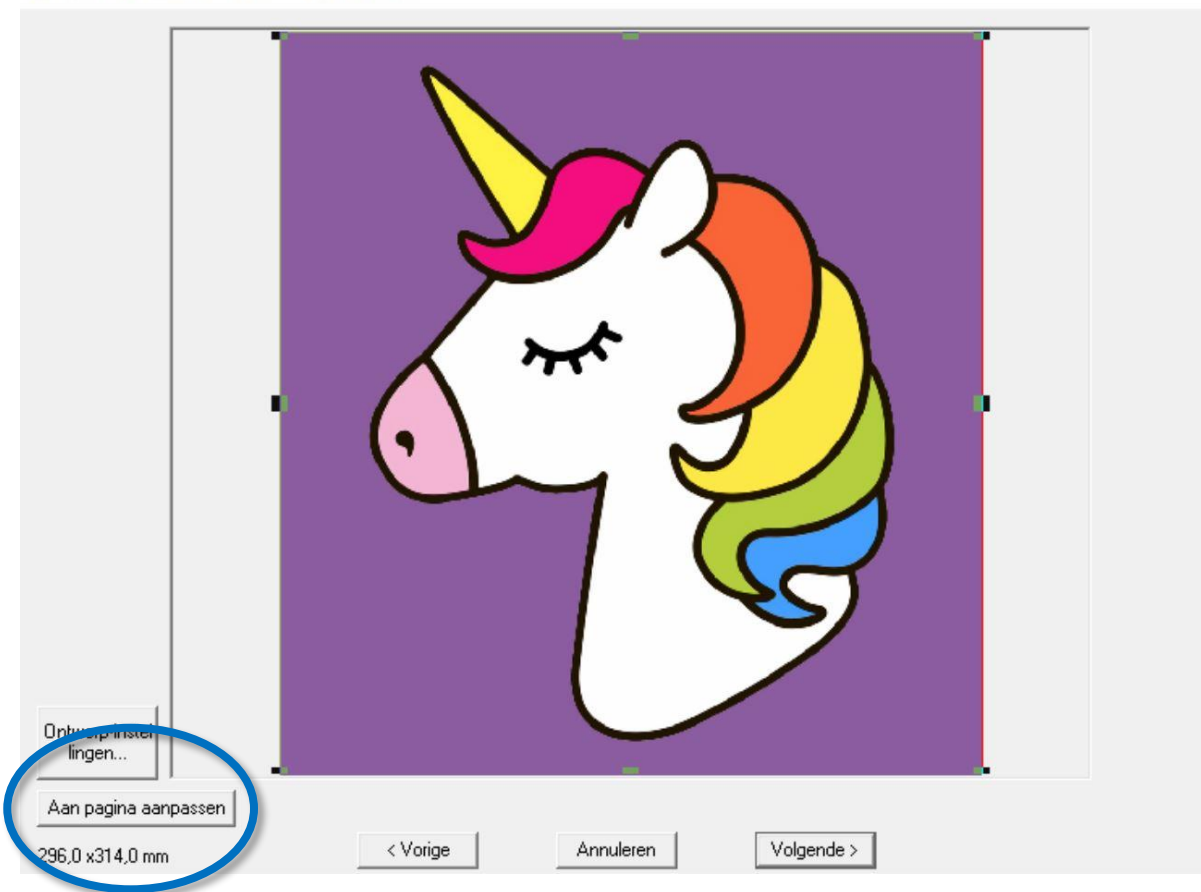


Masker selecteren



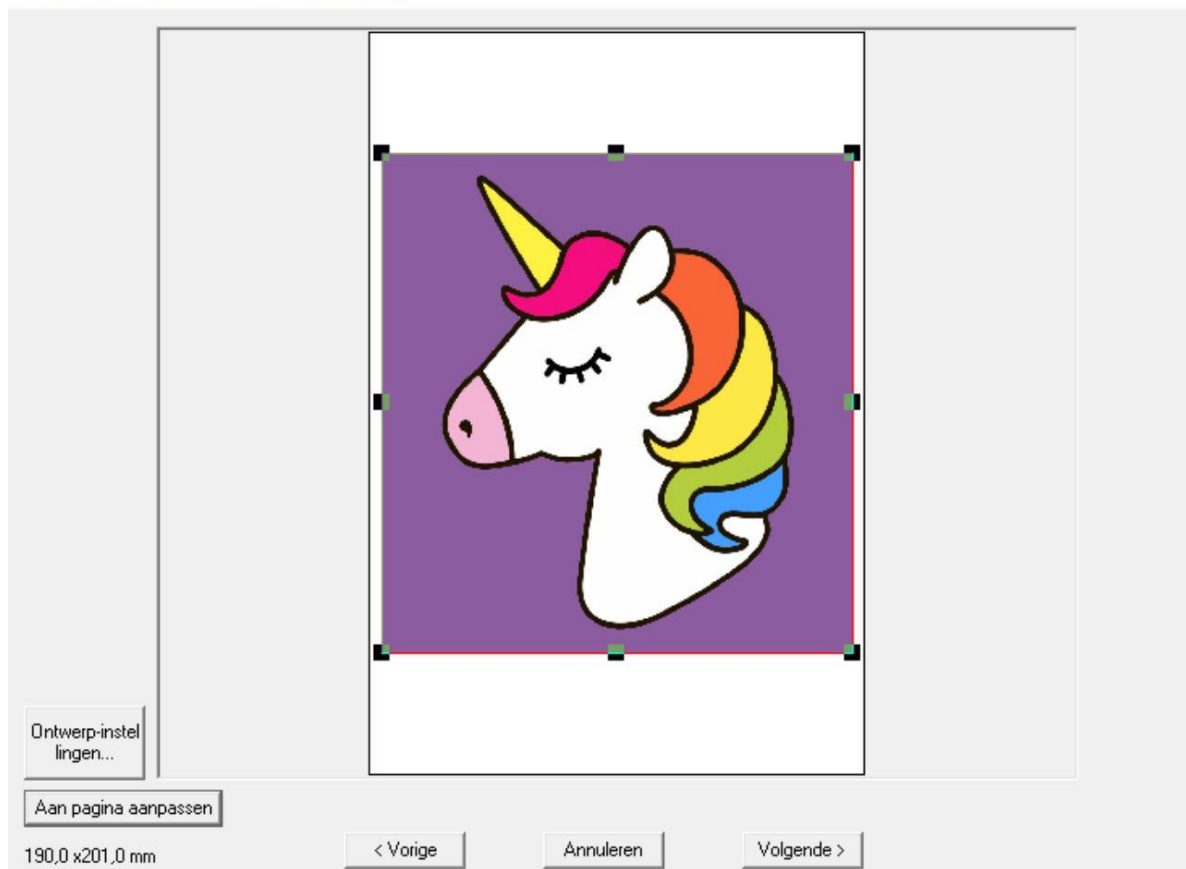
Maskervorm controleren/Afbeelding wijzigen

Maskervorm controleren/Afbeelding wijzigen



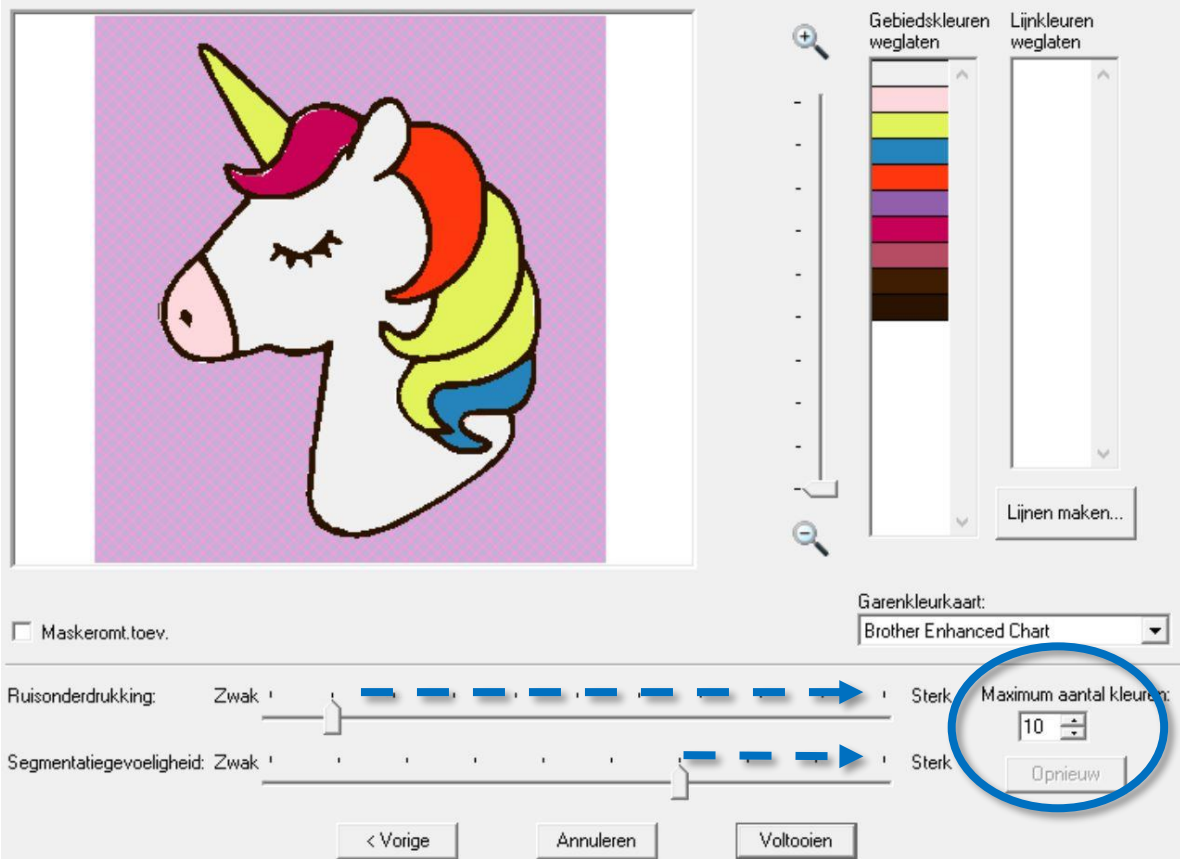
Maskervorm controleren/Afbeelding wijzigen

Maskervorm controleren/Afbeelding wijzigen



Parameters voor Automatisch converteren

Parameters voor Automatisch converteren



The interface displays a preview of a unicorn illustration on a purple background. To the right, there are two lists for color removal: 'Gebiedskleuren weglaten' (Area colors to remove) and 'Lijnkleuren weglaten' (Line colors to remove). The 'Gebiedskleuren weglaten' list contains several colors, while 'Lijnkleuren weglaten' is empty. A 'Lijnen maken...' button is located below the line color list. Below these lists, there is a 'Garenkleurkaart:' dropdown menu set to 'Brother Enhanced Chart'. At the bottom, there are two sliders: 'Ruisonderdrukking' (Noise reduction) and 'Segmentatiegevoeligheid' (Segmentation sensitivity), both ranging from 'Zwak' (Weak) to 'Sterk' (Strong). A 'Maximum aantal kleuren:' (Maximum number of colors) field is set to 10, with an 'Opnieuw' (Reset) button below it. Navigation buttons at the bottom include '< Vorige', 'Annuleren', and 'Voltoeien'.

Maskeromt.toev.

Garenkleurkaart: Brother Enhanced Chart

Ruisonderdrukking: Zwak | Sterk

Segmentatiegevoeligheid: Zwak | Sterk

Maximum aantal kleuren: 10

Opnieuw

< Vorige Annuleren Voltoeien

Parameters voor Automatisch Converteren

Parameters voor Automatisch converteren



The interface displays a central preview window showing a cartoon unicorn with a yellow body and purple mane on a purple background. To the right of the preview are two vertical lists: 'Gebiedskleuren weglaten' (Area colors to omit) containing yellow, purple, and black, and 'Lijnkleuren weglaten' (Line colors to omit) which is currently empty. A 'Lijnen maken...' button is located below the second list. Below these lists is a 'Garenkleurkaart:' dropdown menu set to 'Brother Enhanced Chart'. At the bottom, there are two sliders: 'Ruisonderdrukking' (Noise reduction) and 'Segmentatiegevoeligheid' (Segmentation sensitivity), both ranging from 'Zwak' (Weak) to 'Sterk' (Strong). A 'Maximum aantal kleuren:' (Maximum number of colors) spinner is set to 3, with an 'Opnieuw' (Reset) button next to it. Navigation buttons at the bottom include '< Vorige', 'Annuleren', and 'Voltooien'. A checkbox 'Maskeromt.toev.' is also present.

De linkerzijbalk inrichten



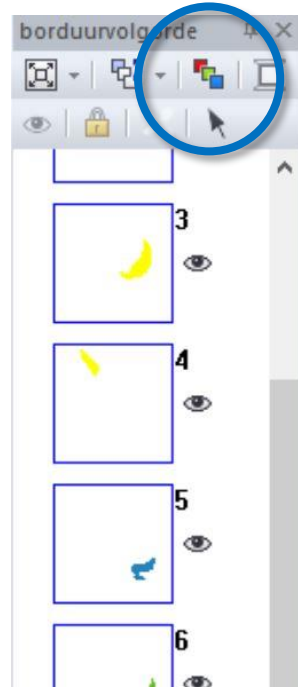
De linkerzijbalk inrichten - Zoomen



De linkerzijbalk inrichten – Tonen op kleurvolgorde



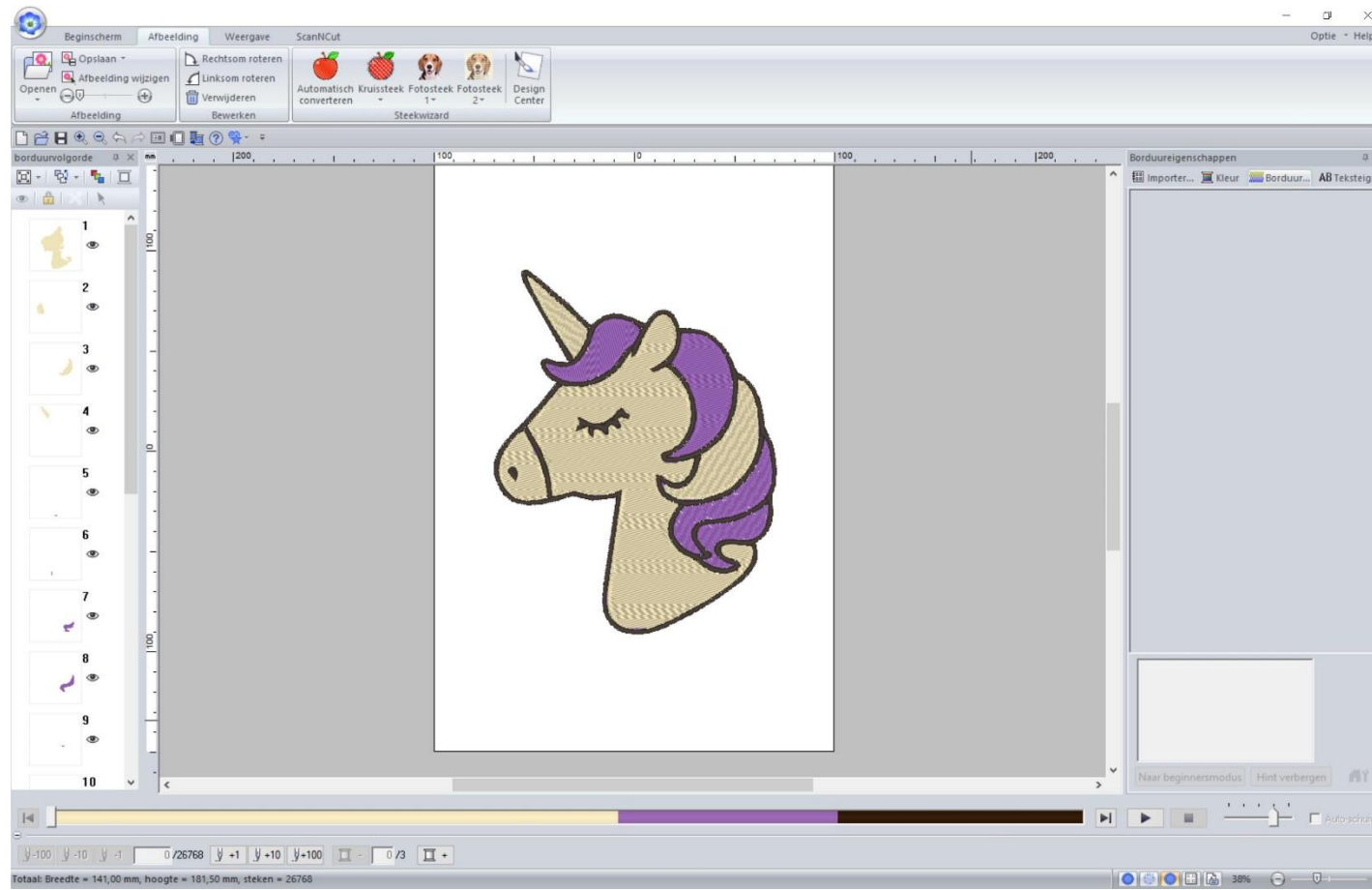
De linkerzijbalk optimaliseren – Tonen op kleurvolgorde + steeksimulator



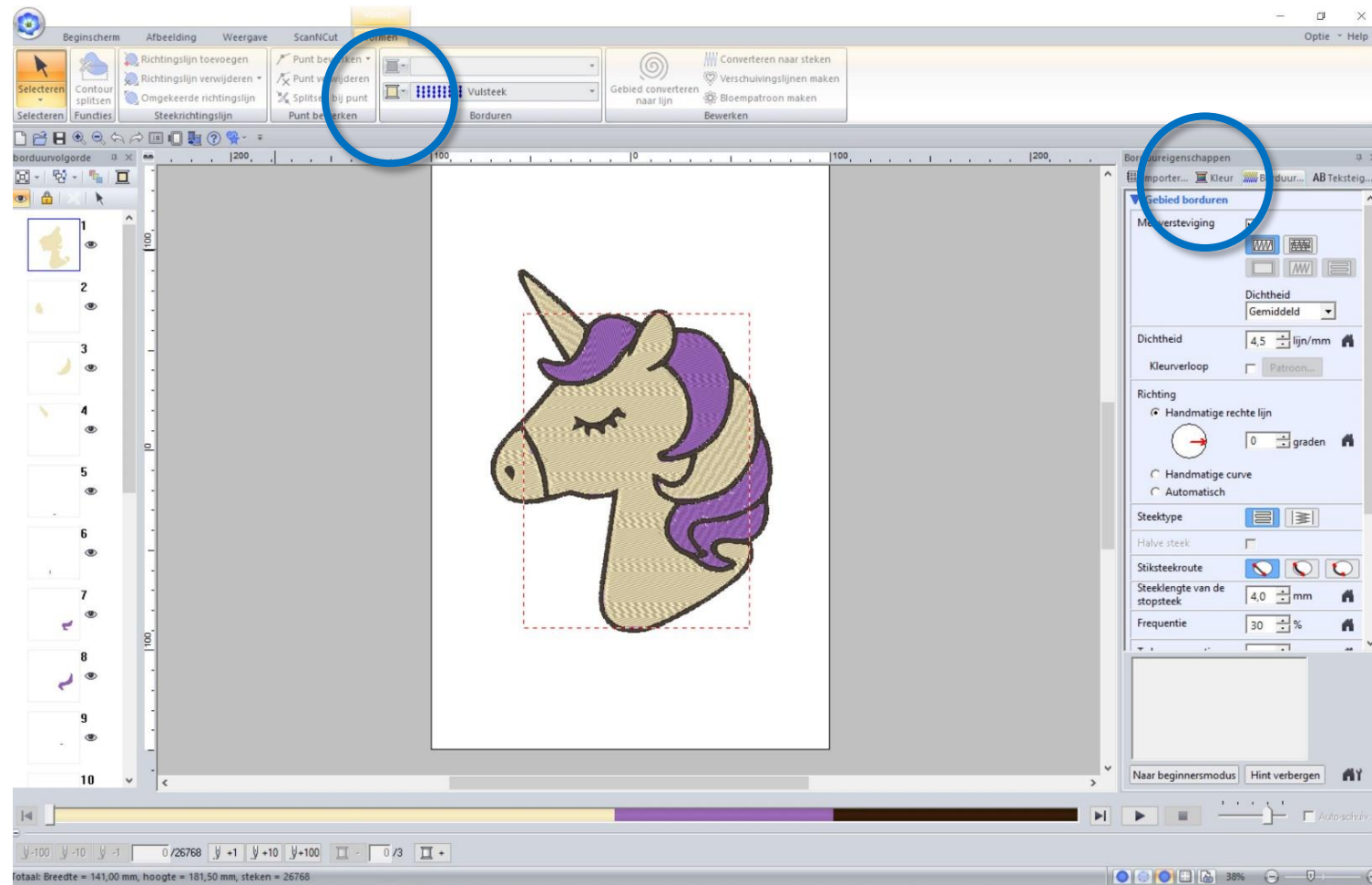
De linkerwerkbalk inrichten – Objecten zonder steken verbergen



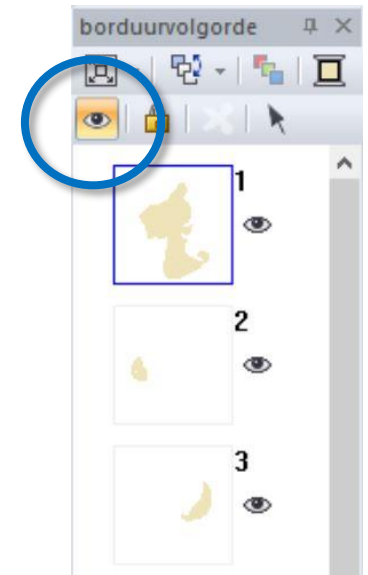
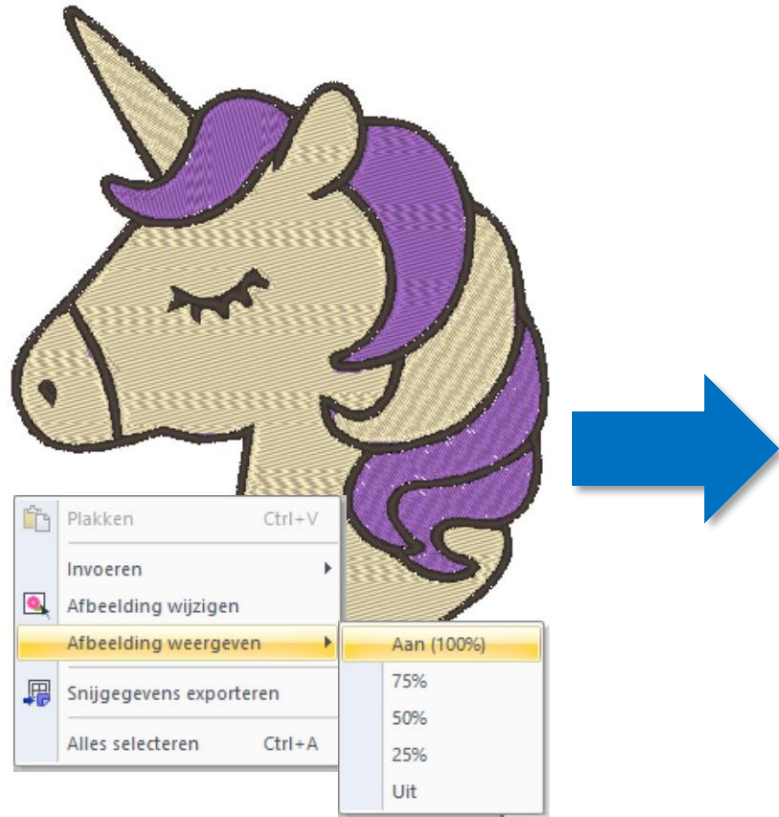
Het borduurpatroon optimaliseren



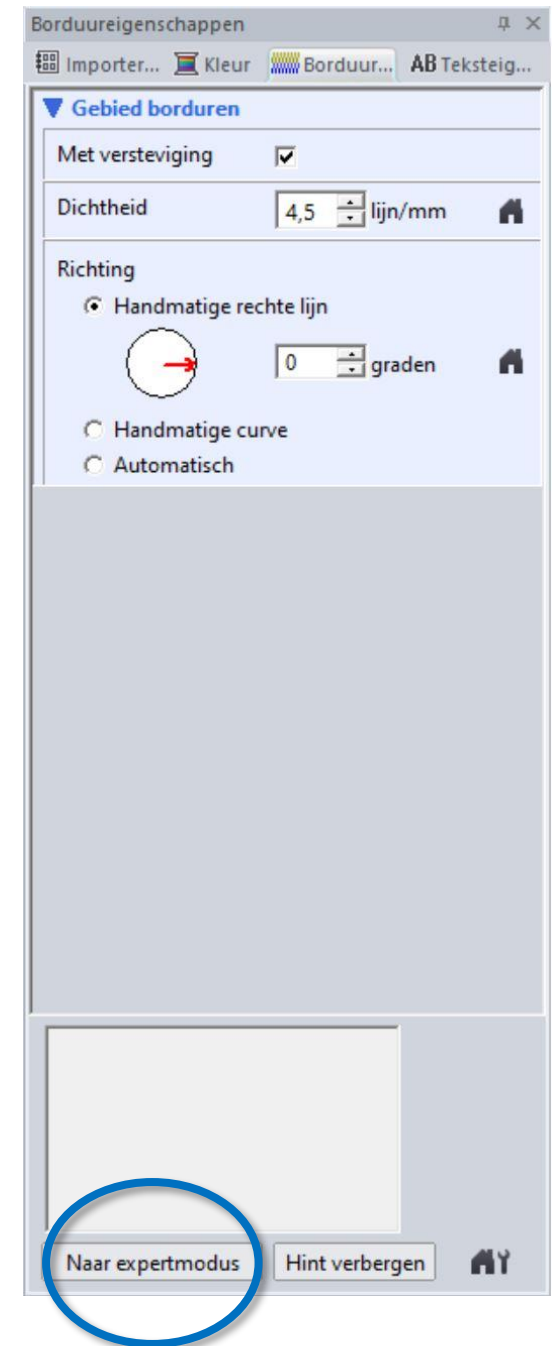
Kleur aanpassen



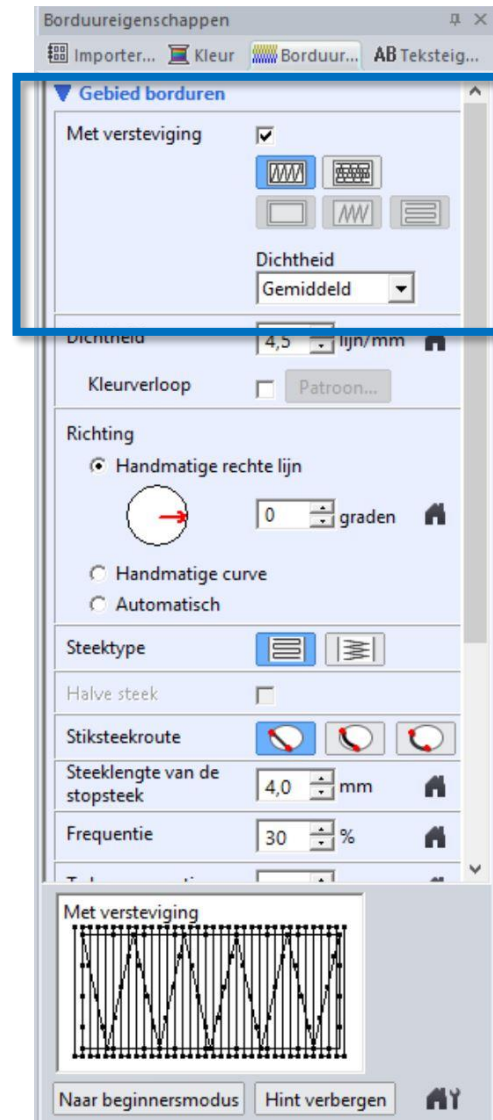
Kleur aanpassen



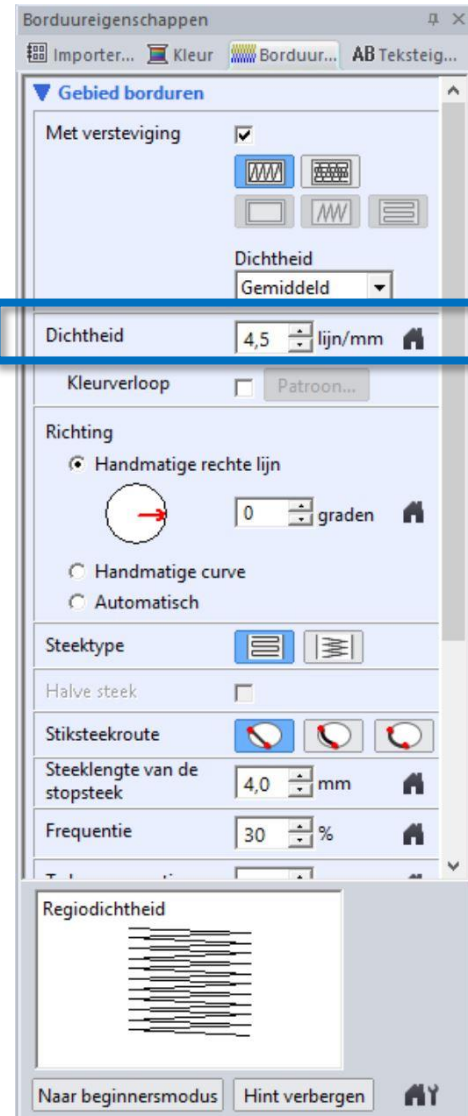
Borduureigenschappen



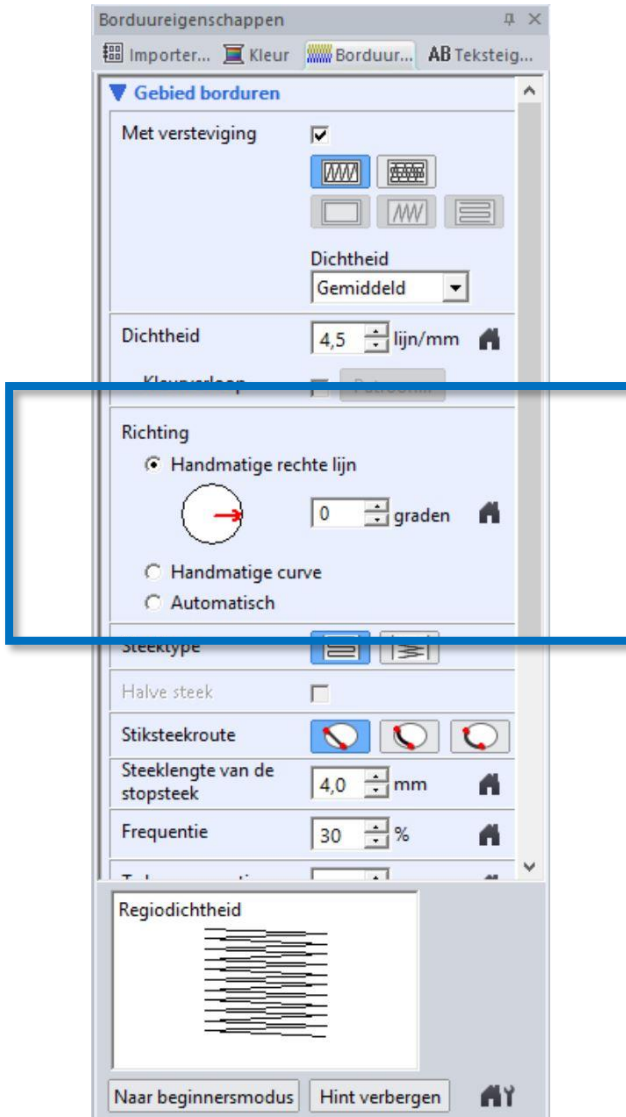
Borduureigenschappen - Versteving



Borduureigenschappen - Dichttheid



Borduureigenschappen - Richting



Borduureigenschappen - Richting

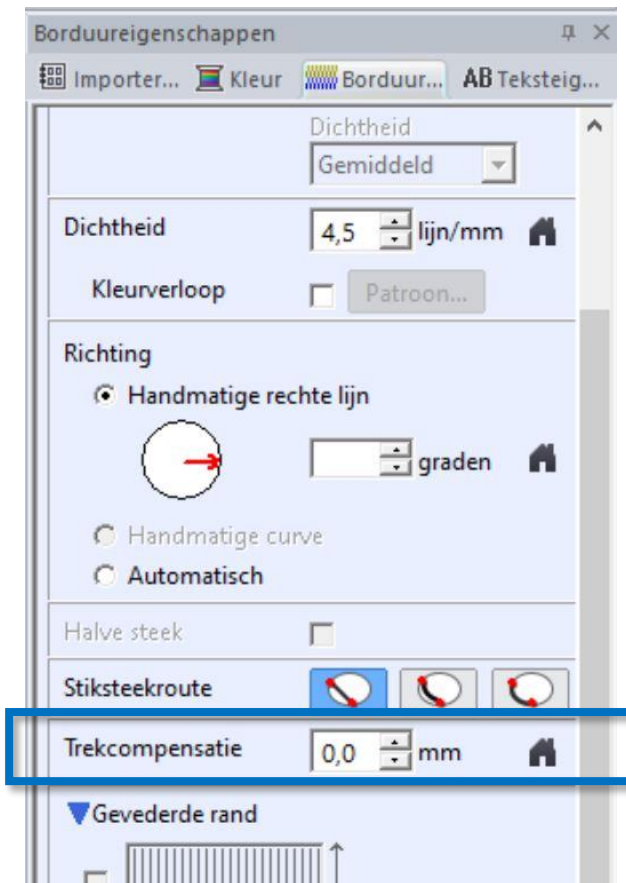


<< Alles in één richting.

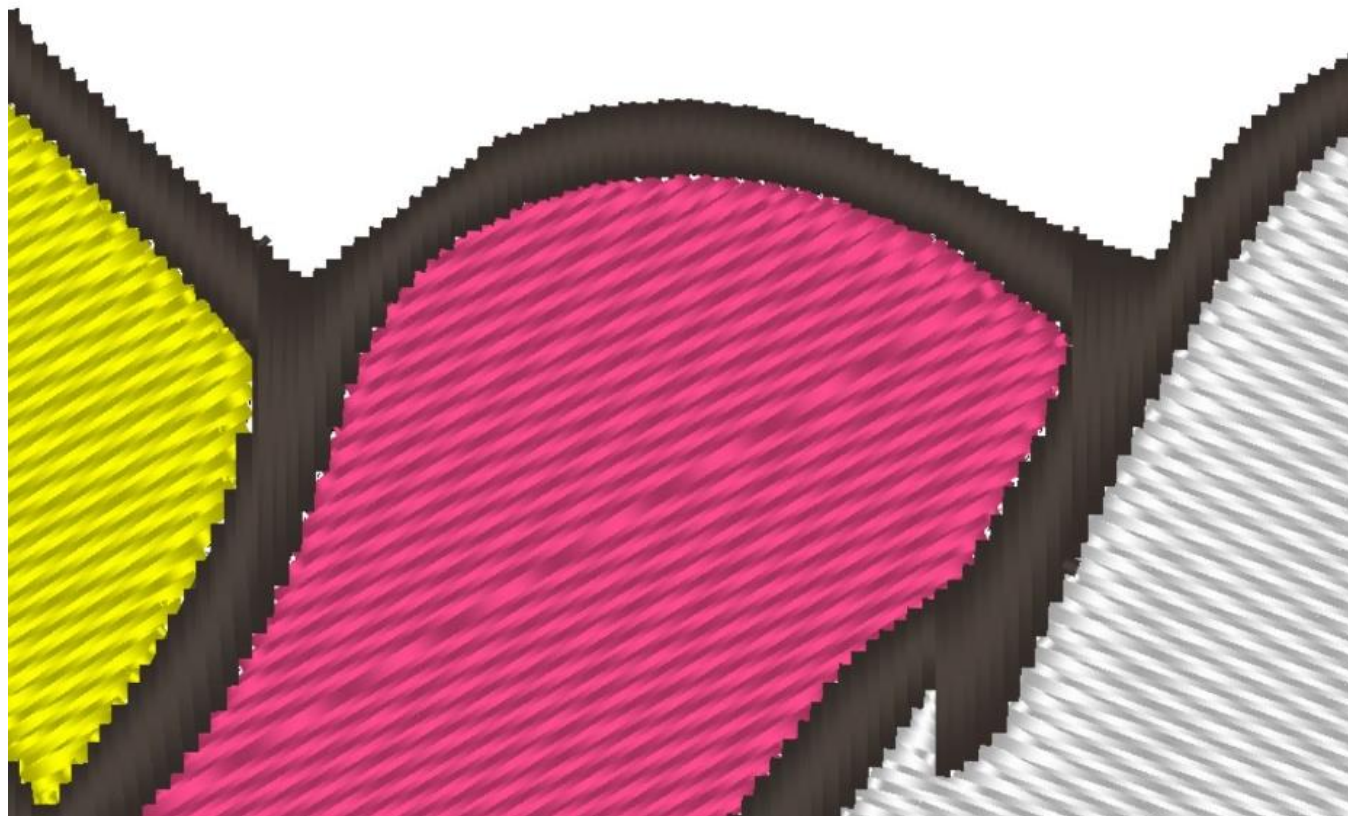


Diverse richtingen. >>

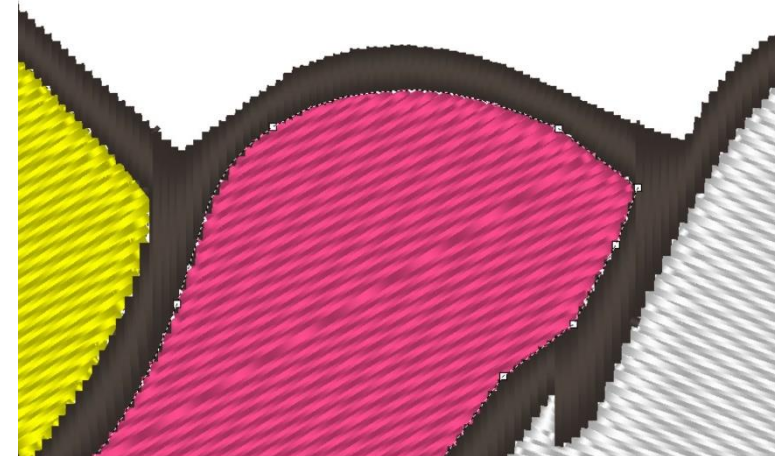
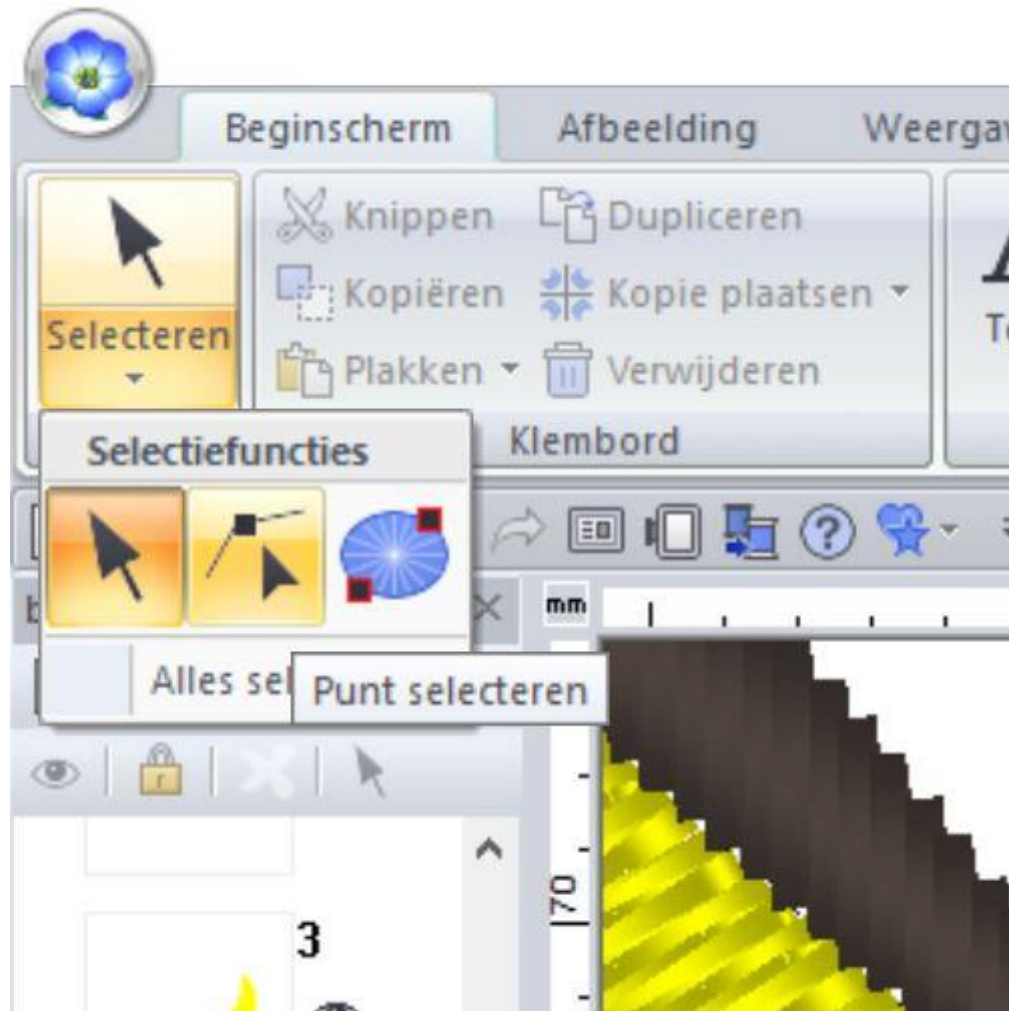
Borduureigenschappen - Trekcompensatie



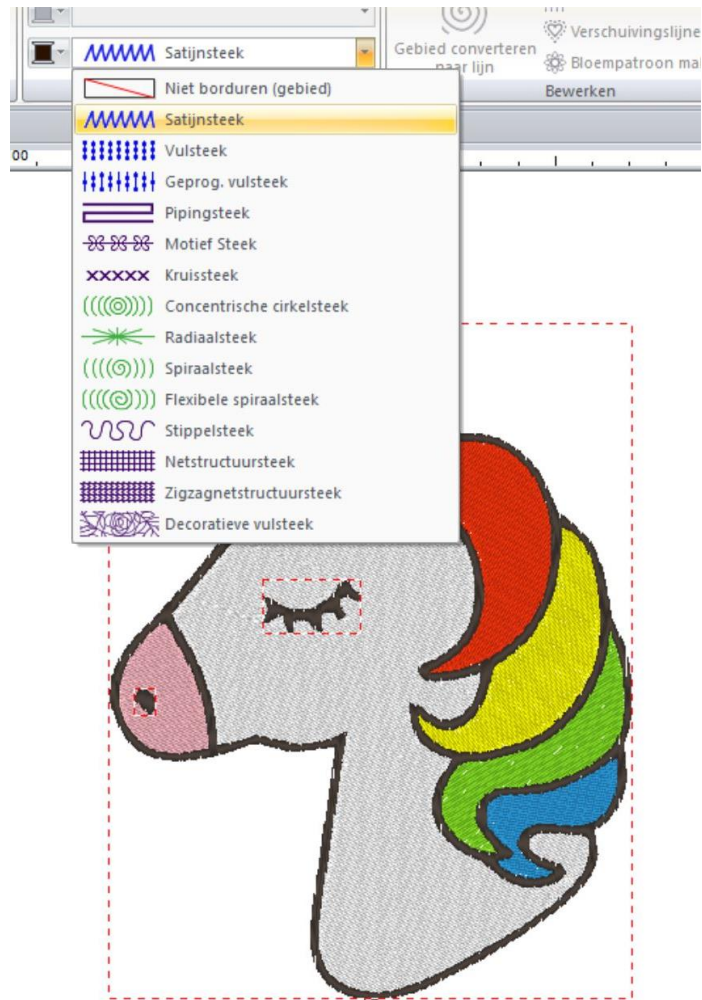
Gaten wegwerken



Gaten wegwerken



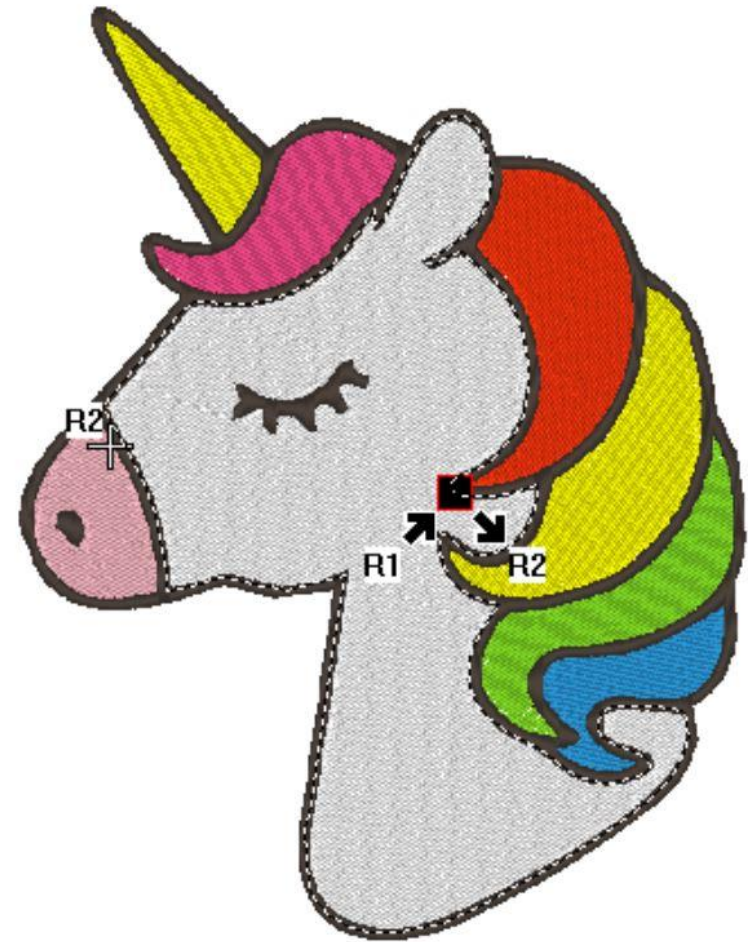
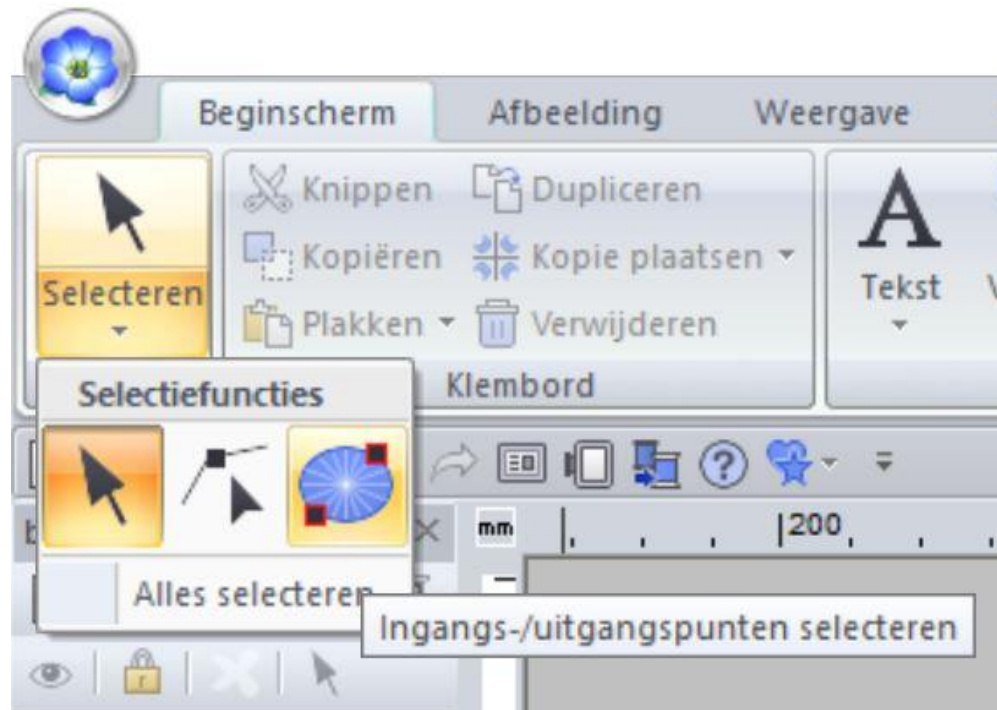
De Satijnsteek



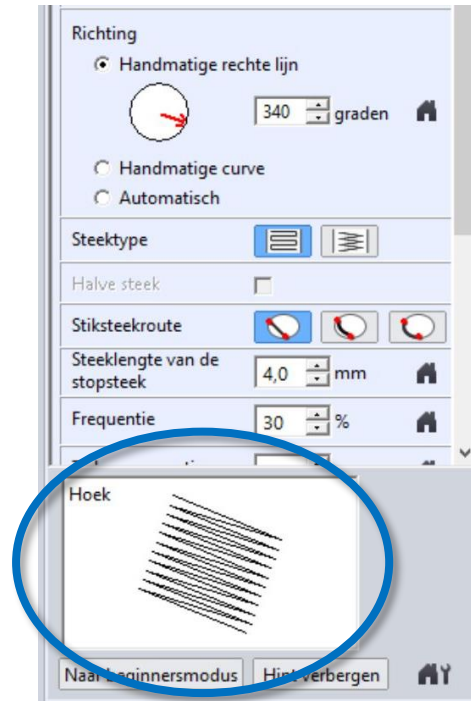
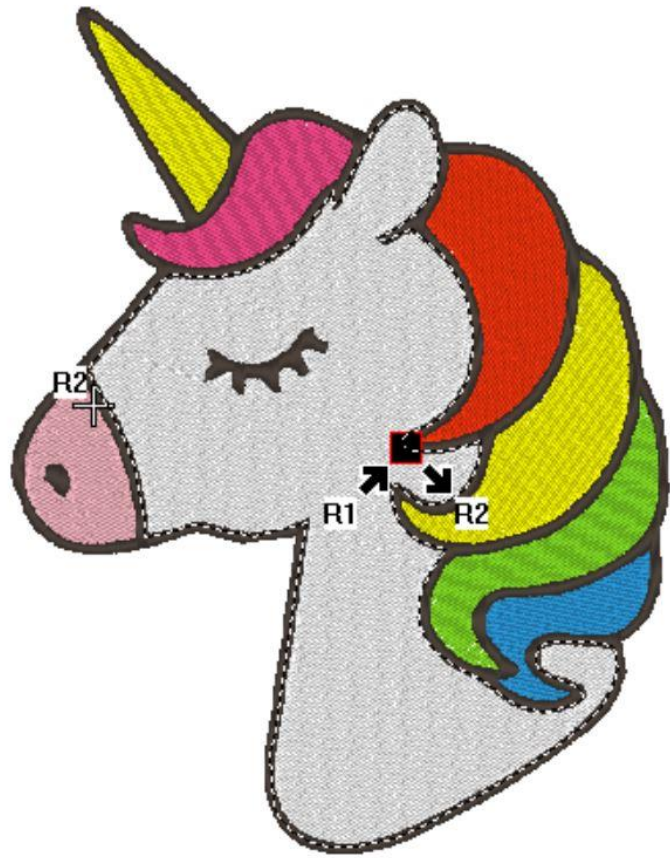
Storende lege gebieden verwijderen



Ingangs- en uitgangspunten optimaliseren



Ingangs- en uitgangspunten optimaliseren



Klaar! We zijn benieuwd naar de resultaten



Bedankt voor uw aandacht en inzet!

Wilt u ons uw borduurwerk mailen?
We willen het graag zien!